

REINTEGRATION

Olga Shmuylovich

Process of Creation – creation of an Artwork, for one – reaches the point when particles (“Substance Agents” *) of this Artwork-Visual Entity start running apart, dissolving into shapeless matter, DESINTEGRATE.

The particles – Substance Agents – are pulled, again, together by the Concept of Creation, and they congregate into a new Union of Substance Agents as building blocks.

The REINTEGRATED formation Artwork as Visual Entity is shaped in a unique way – yet resembles Artwork-Visual Entity of previous format.

Process of Creation knows no end.

Olga Shmuylovich, January 2018

* “Substance Agents” – agents formatting, shaping ever changing entities of existence. After N.O. Losskiy



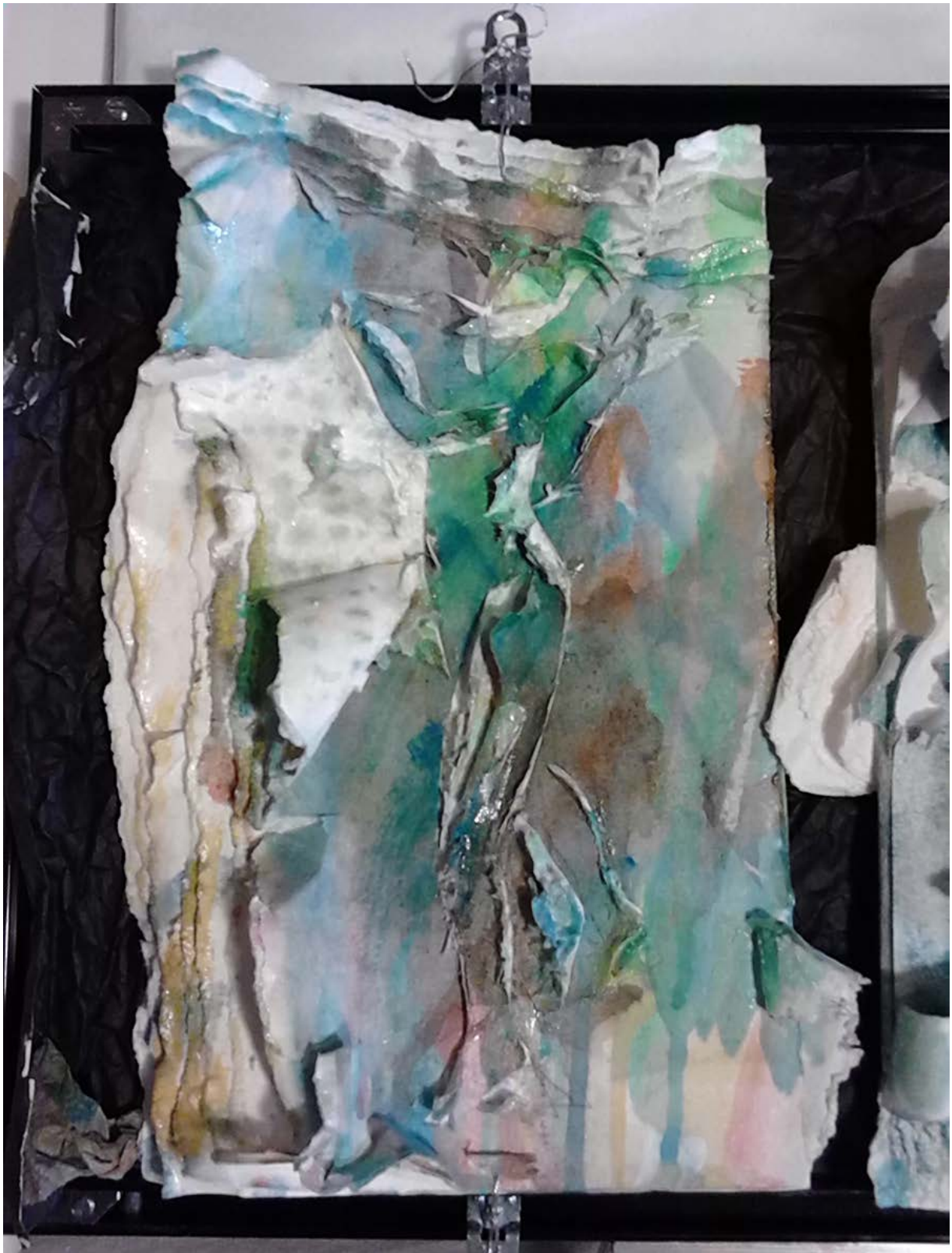
Olga Shmuylovich, Reintegration. Mixed medium. Full view



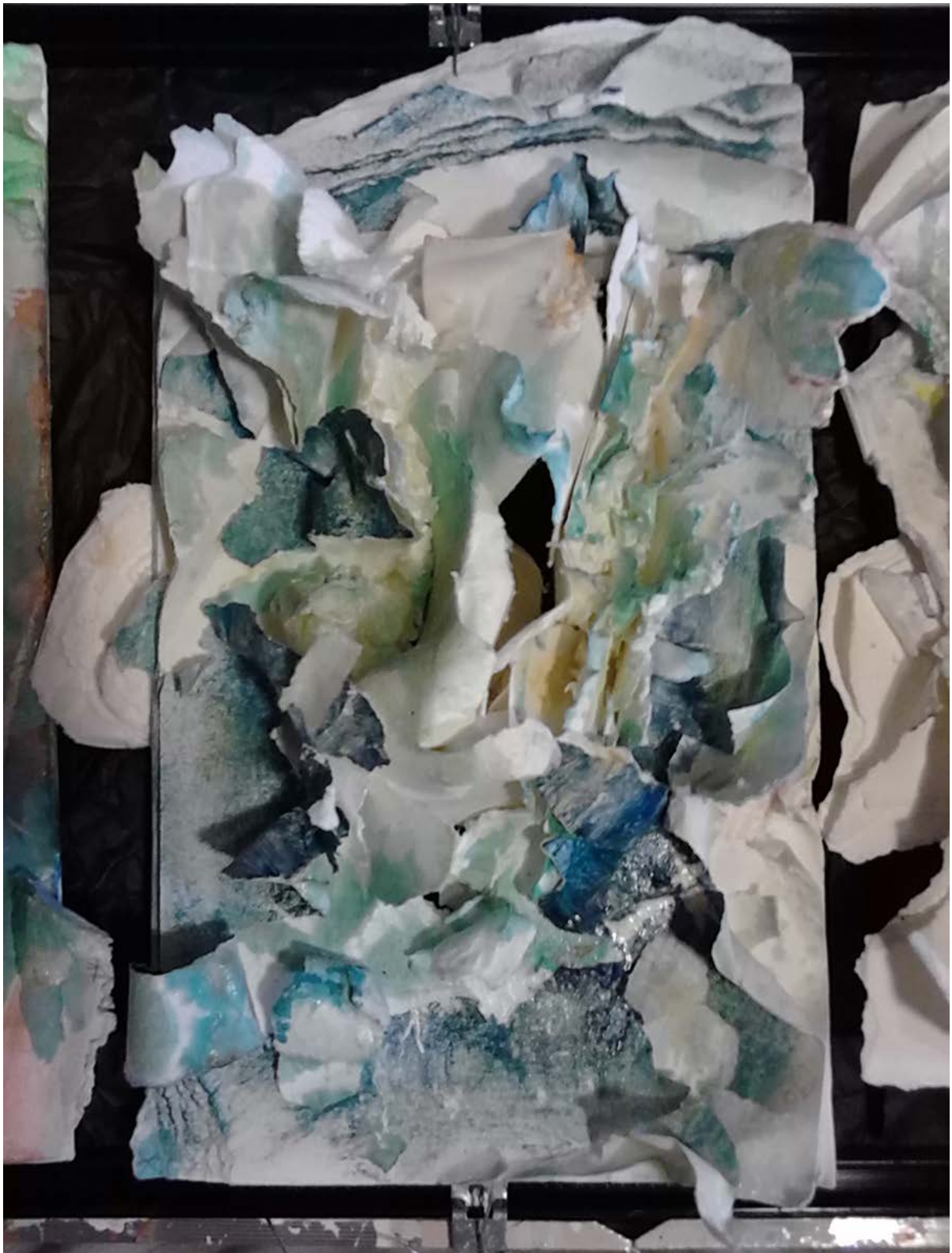
Olga Shmuylovich, Reintegration. Mixed medium. 1



Olga Shmuylovich, Reintegration. Mixed medium. 2, 3, 4, 5



Olga Shmuylovich, Reintegration. Mixed medium. 2



Olga Shmuylovich, Reintegration. Mixed medium. 3



Olga Shmuylovich, Reintegration. Mixed medium. 4



Olga Shmuylovich, Reintegration. Mixed medium. 5



Olga Shmuylovich, Reintegration. Mixed medium. 6